

Accessibility Guide for Teesdale Barnard Castle Caravan & Motorhome Club Site

Contact for Accessibility Enquiries: Please ask for the Duty Manager

✉ teesdalebarnardcastle@camc.com

☎ 01833 637999



<https://www.caravanclub.co.uk/club-sites/england/north-east-england/county-durham/teesdale-barnard-castle-club-campsite/>

At a Glance



Level Access

- The site has level sections but slopes towards each tier, the slopes towards the lower tier (pitches 58 - 75) are steeper and do also have a staircase with handrails for pedestrian access to facilities



Step only Access

- There is no step only access on site, however the play area has a very steep path to access



Accessible Toilets and Showers

- There is a combined accessible toilet and shower cubicle in the toilet block



Accessible Pitches

- No designated accessible pitches, however pitches are allocated according to your needs or preference, so please contact us in advance to discuss your requirements.



We support the Hidden Disabilities Scheme

- Our organisation supports the Hidden Disabilities Scheme, lanyards and pins are available in reception

Site Address

Teesdale Barnard Castle Club Campsite
Lartington Lane,
Barnard Castle,
County Durham,
DL12 9BD

Arrival and Reception

Approach Route

- The site is accessed by a tarmac drive
- The reception building is opposite the entrance at the driveway
- There is a fob operated barrier to site
- The ground is level in this area with hard surfaced paths linking facilities.

Parking

- A new arrival bay is set within a few metres of the Reception building.
- There is space for 4 visitor cars to park within 15 metres of the reception, on the tarmac drive, however there are no designated accessible bays
- There is no late night arrival bay

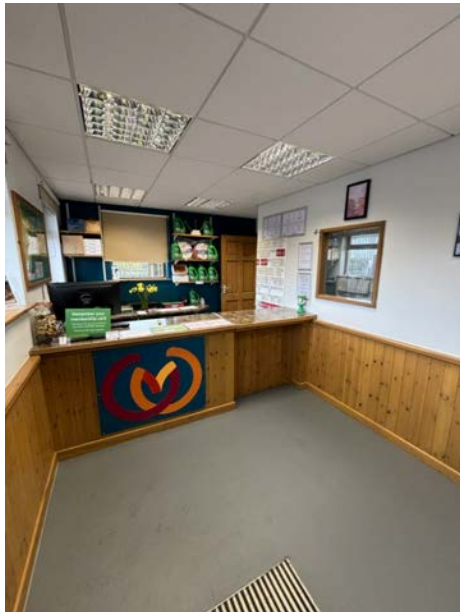
Entrance into Reception

- The reception is accessed by a dropped kerb to the
- The Entrance door is 850mm wide over a level threshold
- The entrance door is not power assisted, and opens inwards



Reception

- There is approximately 2500mm x 2700mm turning space, clear of the desk and furniture
- The reception desk is set 900mm above the floor with no dropped section
- The desk is not fitted with a hearing loop



Getting around the Site

- The site is generally sloping throughout, the site has level sections but slopes towards each tier, the slopes towards the lower tier (pitches 58 - 75) are steeper and do also have a staircase with handrails for pedestrian access to facilities

- Pedestrians share vehicles routes, which are well maintained tarmac with no speed bumps

Pitches

- There are 95 pitches on site, all of which are hardstanding
- Temporary multipurpose access rubber matting is not provided
- There are no designated accessible pitches, however pitches are allocated according to your needs or preference, so please contact us in advance to discuss your requirements.

Toilets and Changing Facilities

Accessible Toilets and Bathing Facilities – Toilet Block

- A combined Accessible Toilet and Shower cubicle is located in the Toilet Block, which is to the center of the site
- The Accessible Toilet and Shower cubicle is accessed via dropped kerbs to the block paths around the toilet block
- The door is 800mm wide, over a level threshold and opens outwards
- The cubicle door is secured by a RADAR key. A key can be borrowed from Reception
- The cubicle's overall dimensions are 2900mm x 2100mm
- The WC pan is right hand transfer.
- The shower seat is left hand transfer
- The toilet seat is 480mm, and the shower seat is 500mm above the floor level
- The clear space to the side of the toilet is 1100mm wide
- The cubicle is fitted with pull cord alarms, which are tested frequently
- The shower seat and WC Pan are fitted with grab rails to assist transfer
- Shower controls are 900mm high
- The shower head is fitted on a sliding rail, which is a minimum of 1000mm above floor level
- The basin taps and shower controls are fitted with levers



Standard Toilets and Washrooms

- There is one toilet block to the centre of the site
- There are dropped kerbs to access the toilet block
- The male and female facilities toilet, have 900mm wide doors, with 120mm thresholds
- The female area has 7 WC cubicles, 6 Shower cubicles and 4 Washbasin Privacy cubicles
- The male area has 4 WC cubicles, 4 Urinals, 6 Shower cubicles and 4 Washbasin Privacy cubicles
- Both the female and male areas have a modified WC cubicle, a modified Shower cubicle and a modified Washbasin Privacy cubicle with grab rails to assist mobility
- Taps in block incorporate lever controls



Baby and Toddler Room

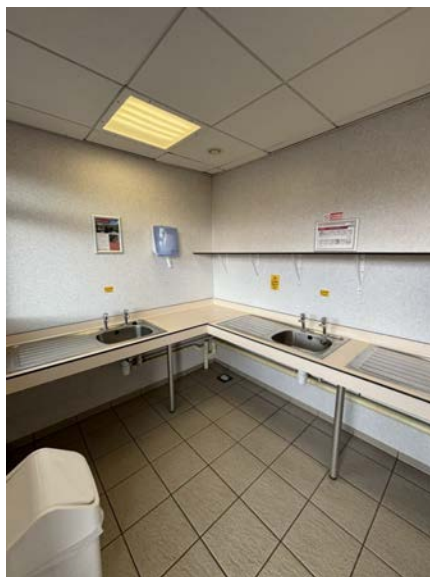
- There is a baby and toddler room in the toilet block
- The door opens to 850mm wide, with a level threshold and opens inwards
- The door's is locked by a standard key which can be borrowed from reception
- The room's dimensions are 1500mm x 2300mm but the floor space does narrow to 1200mm wide in front of the bath tub
- There is a WC at 430mm
- There is a half bath with a shower above, this has thumb turn taps to operate
- There is a drop down baby change unit at 800mm
- The basin has lever taps



Other Facilities

Dishwashing – Toilet Block

- There is a dishwashing area in the toilet block
- The door opens to 800mm wide, over a level threshold and opens inwards
- There is 2300mm x 1400mm clear space
- There are 3 sinks in a 850mm high counter with 750mm knee space underneath
- There is a shelf that is 670mm above the sink counter
- There are lever taps available



Laundry – Toilet Block

- The door is 800mm wide, over a level threshold and opens outwards
- The room's dimensions are 2300mm x 1400mm
- There is 1 front loading washing machine and 1 front loading tumble dryer
- There are two sinks in an 850mm high counter with 750mm knee space below
- Lever turn taps fitted



Information Room – Adjacent to Reception

- The information room is adjacent to the reception
- The door opens to 800mm wide, over a level threshold and opens inwards
- The room's dimensions are 1900mm x 1900mm
- Information is displayed at 1000mm high



Dog Walk

- There is a dog walk to the south of the site
- There is access to the dog walk via grass
- There is a large double gate to access
- The ground is grass in the dog walk area



Play Area

- There is a play area to the south east of the site
- There is access to the play area via a very steep slope or a set of stairs
- There is a 900mm wide gate to access the play area
- The play equipment is mounted on safety flooring



Service Points

- There are Service Points at intervals around the site, please check the site map for details
- All of the service points are on concrete settings, with level access from adjacent roadways

- The paths around the Service Points can be as narrow as 700mm wide
- The water taps are at a maximum of 800mm high, with cross head taps
- Chemical Emptying Points can be found here too with taps at a maximum of 1200mm high



Motorhome Service Point

- There is one Motorhome Service Point on site, located adjacent to the toilet block
- The taps are 850mm above a 90mm kerb



Recycling & Waste Area

- This site has a single waste and recycling area, please consult the Site Map for its specific location. If you have any concerns or questions please discuss with the site team during your stay.

Information

Written Information

- A range of leaflets for local attractions are available in the Information Room.
- Please ask at reception if you have difficulty reading third party leaflets and staff will be happy to read these to you upon request

Customer Care & Support

Booking Procedures

- If you have any specific requirements for your stay please contact the site directly and they will be happy to discuss your requirements and reserve you the most suitable pitch wherever possible.

Evacuation

- There is an assembly point opposite the reception in the event of an emergency
- Please ask at reception for more details

Customer Care and Staff Training

- All on site staff have received disability awareness and etiquette training.

Public Transport

- There is a bus which goes to Middleton from outside of the site entrance
- There are buses to Bishop Auckland & Darlington from Barnard Castle Town Centre

Taxi

- Please contact the site who keep a list of local taxi companies including those offering a wheelchair accessible service where available.