

## Accessibility Guide for Coniston Park Coppice Caravan & Motorhome Club Site

Contact for Accessibility Enquiries: Please ask for the Duty Manager

✉ conistonparkcoppice@camc.com

☎ 01539 441555

🌐 <https://www.caravanclub.co.uk/club-sites/england/lake-district/cumbria/coniston-park-coppice-caravan-club-site/>

### At a Glance

#### Level Access

- The site is set on a steep hillside, meaning there are lots of slopes and hills but there are various level sections.
- Most areas have level access, however many of them are over grass or large stone chipping surfaces
- There is a Universally Accessible Glamping Cabin on site

#### Step only Access

- The Glamping Pods, Camping Pods, Classic Glamping Cabins are all Step Only Access

#### Accessible Toilets and Showers

- There are 3 accessible combined toilet and shower cubicles. One in Toilet Block A, one in Toilet Block B, and one in Toilet Block C.
- There are 3 baby and toddler washrooms available. One in Toilet Block A, one in Toilet Block B, and one in Toilet Block C.

#### Accessible Pitches

- No designated accessible pitches, however pitches are allocated according to your needs or preference, so please contact us in advance to discuss your requirements.



#### We support the Hidden Disabilities Scheme

- Our organisation supports the Hidden Disabilities Scheme, lanyards and pins are available in reception -

## **Site Address**

Coniston Park Coppice Caravan Club Site

Park Gate,

Coniston,

Cumbria,

LA21 8LA

## **Arrival and Reception**

### **Approach Route**

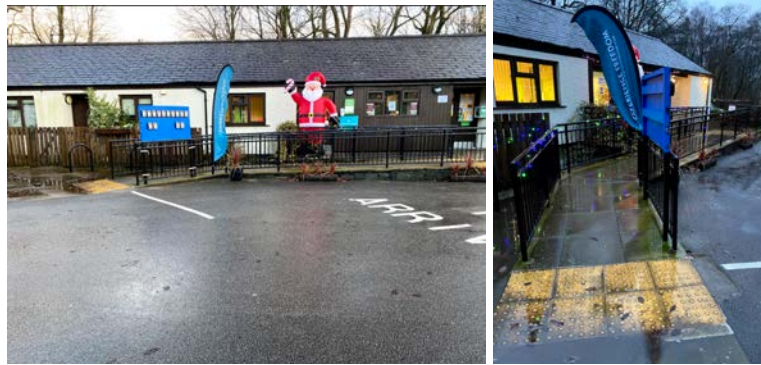
- Access into the site is down a tarmac drive with a large open area in front of reception
- The reception building is on the left hand side when you enter the site
- The ground is level in this area with hard surfaced paths linking facilities.

### **Parking**

- 2 new arrival bays are set within a few metres of the Reception building.
- 6 standard parking bays and one disabled bay for visitors are also available within 10 metres of Reception
- There is 1 late arrival bay next to the visitor bays, and 2 further late night arrival bays opposite reception with access to an electric connection charging bollard.

### **Entrance into Reception**

- There are two entrances, the main entrance with a 4 meter ramp, that is 1350mm wide set at a low gradient (1:13). The other with four steps. The ramp and steps both have handrails on either side.
- The Entrance door is 850mm wide
- The entrance doors are not power assisted, and open inwards
- There are key boxes for each of the Glamping Pods, Camping Pods and Airstreams at the bottom of the ramp. The lower level is 1350mm from the ground and the higher level is 1600mm from the ground.
- There is a call bell for attention that is approximately 1650mm from the ground



## Reception

- The room in front of the reception desk is approximately 3200mm x 4000mm
- The reception desk is set 950mm above the floor and incorporates a dropped, lift up counter top that is 750mm high with kneespace of 950mm in width
- The desk is not fitted with a hearing loop
- In the same building as reception, around the corner is unisex, accessible toilet. The door opens to 850mm wide, the internal dimensions are 1500x2050mm. The toilet seat is 500mm high with left hand assist, the sink is 850mm high and there are wall mounted handles to provide stability.



## Getting around the Site

- The site slopes at various gradients all the way through the site with some level areas
- Pedestrians share vehicles routes which are well maintained tarmac, but do incorporate speed bumps

## **Pitches**

- There are 240 pitches on site, 228 of which are hardstanding
- Roll out mats are not provided
- There are no designated accessible pitches, however pitches are allocated according to your needs or preference, so please contact us in advance to discuss your requirements.
- Not all pitches are completely level, some are at an angle.
- Nearest pitches to toilet blocks – 10 metres
- Nearest pitch to Reception – 60 metres (most pitches are quite a distance from reception and require going up steep slopes to get to reception)
- Pitches are allocated according to need/preference. Please contact us in advance to discuss your requirements.

## **Camping Pitches**

- There are 10 camping pitches in total, all of which are on grass which is over hardstanding gravel - hard standing rock pegs are needed.
- A service point with drinking water and water drainage is available close to the entrance of the camping field
- The camping field is a short walk to Toilet Block A
- There is a children's playground next to the camping field

## **Toilets and Changing Facilities**

### **Accessible Toilets and Bathing facilities – Toilet Block A (Opposite Pitches 9 and 10)**

- A combined Accessible Toilet and Shower cubicle is located in Toilet Block A which is located close to the tent field, on the north of the campsite.
- To access the toilet block there is a timberwood decking, accessible via a shallow ramp which is 1150mm wide
- The cubicle door is 850mm wide, over a level threshold
- The cubicle door is secured by RADAR key. A key can be borrowed from Reception
- The cubicle's overall dimensions are 3100 x 2300mm
- The WC pan is left hand transfer.
- The shower seat is left hand transfer

- The toilet seat is 480mm, and the shower seat is 500mm above the floor level
- The cubicle is fitted with a pull cord alarm, which is tested frequently
- The shower seat and WC Pan are fitted with grab rails to assist transfer
- Shower controls are 960mm high
- The shower head is fitted on a sliding rail, which is a minimum of 1420mm above floor level
- The basin taps and shower controls are fitted with levers



### **Accessible Toilets and Bathing facilities – Toilet Block B (Opposite Pitch 232)**

- A combined Accessible Toilet and Shower cubicle is located in Toilet Block B.
- To access the toilet block there is a timberwood decking surrounding the building that is accessible via stairs and a ramp which is 1150mm wide
- The cubicle door is 850mm wide, over a level threshold
- The cubicle door is secured by RADAR key. A key can be loaned from Reception
- The cubicle's overall dimensions are 3450 x 2300mm
- The WC pan is left hand transfer
- The shower seat is left hand transfer
- The toilet seat is 480mm above floor level, and the shower seat is 500mm above floor level
- The clear space to the side of the toilet is 1300mm wide
- The cubicle is fitted with a pull cord alarm, which is tested frequently
- The shower position and WC Pan are fitted with grab rails to assist transfer
- Shower controls are set within 1000mm of floor level
- The shower head is fitted on a sliding rail, which is a minimum of 1400mm above floor level
- The basin taps and shower controls are fitted with levers



### **Accessible Toilets and Bathing facilities – Toilet Block C (Opposite Pitch 126)**

- A combined Accessible Toilet and Shower cubicle is located within Toilet Block C, which is at the bottom of the site, close to the camping pods.
- To access the Toilet Block there is timberwood decking accessible via a shallow ramp which is 1200mm wide
- The cubicle door is 850mm wide, over a level threshold
- The cubicle door is secured by RADAR key. A key can be loaned from Reception
- The cubicle's overall dimensions are 2300x3100mm
- The WC pan is left hand transfer
- The shower seat is left hand transfer
- The toilet seat is 480mm above floor level, and the shower seat is 500mm above floor level
- The cubicle is fitted with a pull cord alarm, which is tested frequently
- The shower position and WC Pan are fitted with grab rails to assist transfer
- Shower controls are set within 960mm of floor level
- The shower head is fitted on a sliding rail, which is a minimum of 1280mm above floor level
- The basin taps and shower controls are fitted with levers



## **Standard Toilets and Washrooms**

- There are three toilet and shower blocks, one close to the tent area (A), one towards the middle of the site (B) and one at the bottom of the site close to the camping pods (C)
- Parking is available outside of Toilet Block A and Toilet Block C
- All of the toilet blocks have a timberwood decking, with non slip inserts which are all accessible via ramps. Toilet block B has two staircases as well
- Each male area has 6 toilets, 4 urinals, 9 showers and 6 privacy basins
- Each female area has 8 toilets, 8 showers and 5 privacy basins
- There is a modified cubicle to each male and female area. These are fitted with an outward opening door and grab rail.
- Taps in each block incorporate lever controls

## **Other Facilities**

### **Dishwashing – Toilet block A**

- Level threshold from the decking
- Door opens to 850mm wide
- 900mm high worksurface
- 700mm kneespace
- Lever taps

### **Dishwashing – Toilet Block B**

- Level threshold from the decking
- Door opens to 850mm wide
- 900mm high worksurface



- 700mm kneespace
- Lever taps

### **Dishwashing - Toilet Block C**

- Level threshold from the decking
- Door opens to 850mm wide
- 900mm high worksurface
- 700mm kneespace
- Lever taps

### **Laundry – Toilet Block B**

- Level threshold from the decking
- The door opens to 800mm
- 2 washing machines and tumble dryers, all at ground level
- Sinks at 900mm high with 700mm knee space below and a countertop of 600mm deep.
- Lever taps fitted



### **Laundry – Toilet Block C**

- Level threshold from the decking
- The door opens to 800mm
- 2 washing machines and tumble dryers, all at ground level
- Sinks at 900mm high with 700mm knee space below and a countertop of 600mm deep.
- Lever taps fitted



### **Baby and Toddler Washroom – Toilet Block A**

- Level threshold from the decking
- The door is 800mm wide
- Half sized bathtub with twist controls and a manual shower head
- A lower WC which is 300mm high
- The dimensions of the room are 2000 x 2000mm
- There is a baby changing unit at 1050mm high



### **Baby and Toddler Washroom – Toilet Block B**

- Level threshold from the decking
- The door is 800mm wide
- Half sized bathtub with twist controls and a manual shower head
- A lower WC which is 300mm high
- The dimensions of the room are 2100 x 2100mm
- There is a baby changing unit at 1050mm high



### **Baby and Toddler Washroom – Toilet Block C**

- Level threshold from the decking
- The door is 800mm wide
- Half sized bathtub with twist controls and a manual shower head
- A lower WC which is 300mm high
- The dimensions of the room are 2100 x 2100mm
- There is a baby changing unit at 1050mm high

### **Information Room – In Reception Building**

- Level access via decking
- The door opens to 680mm wide
- There is a 1500mm turning circle
- Racks are up to 1700mm in height

### **Shop - In Reception Building**

- Level access via decking
- The door opens to 850mm wide
- There is limited space inside, only 1300 x 1800mm
- The counter is 900mm high

### **Payphone - In Reception Building**

- Level access via decking
- Door opens to 700mm wide
- Small room within, only 690 x 800mm
- The phone and coin slot are both at 1350mm high

## Service Points

- Located at regular intervals around the campsite - check the site map for details
- Level access to roads
- Narrow access to some service points, as narrow as 700mm in some points
- Chemical Waste Service Points can be found at regular intervals



- There is a Camper Clean unit next to one of the Late Night Arrival areas



## Children's Playgrounds

- There are three children's playgrounds on site, at various intervals.
- All three playgrounds have a range of playground equipment mounted on safety surfacing
- There is level access to all three playgrounds, however all of the access points are over grass or gravel
- The gates to each playground open to 1100mm wide



### **Dog Wash**

- There is a dog wash area close to the Glamping Pods

### **Onsite Accommodation**

- **There is a range of onsite accommodation available to book to stay in. The details of each are below.**

### **Glamping Pods**

- There are 10 glamping pods situated at the top corner of the site
- Accessed by tarmac roads, with gravel surrounding each pod
- A gravel parking area for each pod can be found just outside of each pod
- Gravel completely surrounding each pod
- Steps up to each pod with handrails to both sides.
- Entrance doors are 830mm wide over a 70mm threshold.
- Corridors within can be as narrow as 430mm.
- The bathroom has very narrow walkways - it can only accommodate one adult at any time.
- Lever taps in bathroom and kitchen



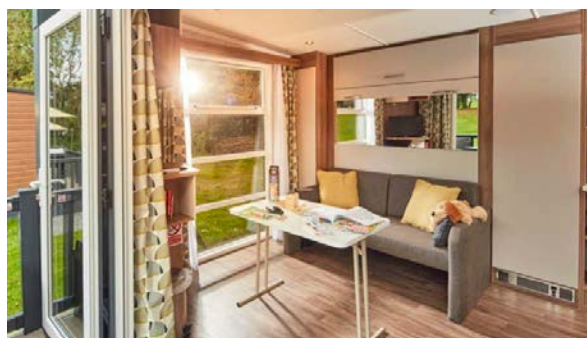
Stepped access up to Glamping Pod only.



The corridor to the kitchen and bathroom is very narrow as can be seen in the left of the photos.

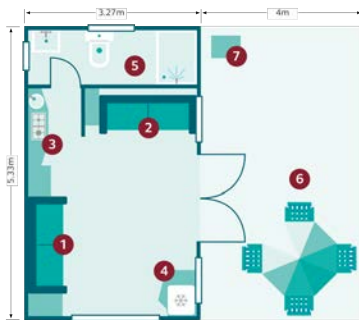


With all of the beds pulled out there is limited moving space.



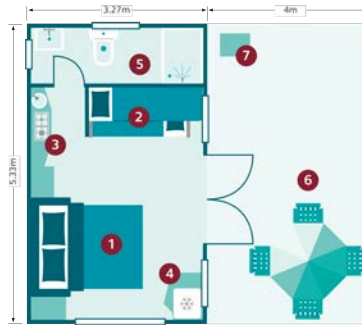
The main double bed is a “Pull Down” with the handle for this at 2meters high. The bed requires a reasonable amount of effort to pull out.

# Accessibility Guide for Coniston Park Coppice Caravan & Motorhome Club Campsite



**Glamping pod – Day**  
No hob at Alderstead Heath or Abbey Wood.  
Accommodation may vary slightly per location.

- Key:**
1. Sofa/fold down double bed.
  2. Sofa/bunk beds.
  3. Kitchen area.
  4. Fridge with TV above.
  5. En-suite with shower.
  6. Veranda with table and chairs.
  7. Boot box.



**Glamping pod – Night**  
Accommodation may vary slightly per location.

- Key:**
1. Sofa/fold down double bed.
  2. Sofa/bunk beds. (Suitable for 2 children).
  3. Kitchen area.
  4. Fridge with TV above.
  5. En-suite with shower.
  6. Veranda with table and chairs.
  7. Boot box.

Floorplan of the Glamping Pod in both daytime and nighttime layouts.



The bathroom inside the Glamping pods is very narrow.



The Glamping Pods are located in the upper part of the site

## Universally Accessible Glamping Cabin

- There is one Universally Accessible Glamping Cabin on site, this can sleep up to 3 adults and 2 children
- Access is via a tarmac road
- There is a gravel parking space, as well as a tarmac area directly in front of the pod which can be used for parking

## Accessibility Guide for Coniston Park Coppice Caravan & Motorhome Club Campsite

- There is a 1500mm wide ramp leading to the pod, with access via a 1500mm wide gate
- The decked area at the front of the pod allows for at least a 1500mm turning circle
- The main entrance door is 900mm wide, over a rollover threshold and opens outwards
- The blinds within the pod are controlled by remotes, which have holders on the walls



Ramped access to the glamping pod



Decking area to the front of the pod



Main Room with twin beds, both twin beds are electrically operated by remotes

- There is approximately 1300mm clear space between the doormat and the first bed
- There is 500mm space between the two beds
- There is an emergency pull alarm next to the first bed
- There is a pullout chair/single bed in the corner of the room
- There is 1200mm between the dining table and the foot of the bed
- The dining table is 750mm high, with 700mm knee space below





The kitchen leads on from the main room

- There is 3400mm x 1500mm clear space within the kitchen
- The counters are 780mm high, with 640mm knee space below the hob and the sink
- There is an electric oven under the counter, with controls at 700mm and the door handle at 600mm
- The fridge is in the lower cabinet
- There is an under counter dishwasher
- The drinking cups are in a pull down rack in the upper cupboards
- A safety kettle is provided



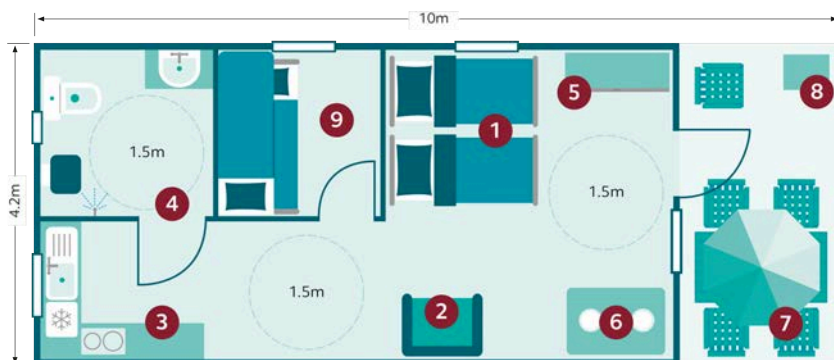
There is a bunk bed room, accessed from the first door in the kitchen

- The door opens to 800mm wide, with a rollover threshold and opens outwards
- There is 1100mm x 1800mm clear space within the room
- The bottom bunk is 900mm high and the top bunk is 1800mm high, there is a ladder provided to access



The bathroom is accessed via the second door in the kitchen

- The door opens to 800mm wide, over a 20mm rollover threshold and opens outwards
- There is 1800mm x 1700mm circulation space within the room
- The WC is left hand transfer and 460mm above the floor with 1200mm clear space to the side
- The Shower Seat is right hand transfer and 500mm above the floor
- The shower has controls at 800mm high, these are controlled by a twist movement
- There is a rain shower head at 2000mm high, and a moveable shower head on a rail between 900mm and 1450mm high
- The basin has lever controls
- The basin is 690mm high, with 640mm knee space
- There are grab rails fitted
- There is an emergency alarm within the bathroom



**Glamping cabin – Universally Accessible – Day**

**Key:**

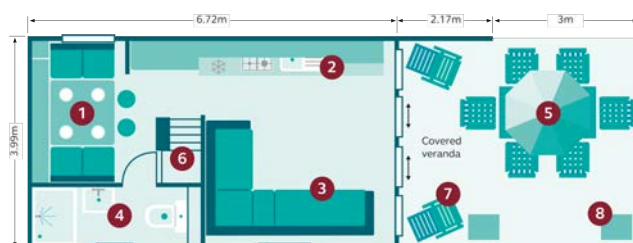
- |   |   |
|---|---|
| 1. Twin beds with orthopaedic mattress. | 6. Fold away table and chairs.                  |
| 2. Sofa chair (converts to single bed). | 7. Veranda with 4 chair bistro set and parasol. |
| 3. Kitchen area.                        | 8. Boot box.                                    |
| 4. Wet room.                            | 9. Bunk bed suitable for 1 adult and 1 child.   |
| 5. Clothes storage.                     |   |

Accommodation may vary slightly per location.

Floorplan of Universally Accessible Cabin

## Glamping Cabins

- There are 4 Glamping Cabins situated at the top of the site
- Designated parking spaces outside of each pod and cabin
- There are 3 steps up to each cabin
- Lever controls to bathroom and kitchen taps
- Entrance doors are 1200mm wide over a 100mm threshold that you must step over
- The kitchen counters are 920mm high, with cupboards underneath so no knee space
- The hob is placed over the oven at 920mm high
- The microwave is 1430mm high, placed adjacent to the upper cabinets
- Walkways within become as narrow as 690mm.
- The door to the bathroom is 550mm
- The bathroom has is narrow, approximately 1000mm wide but narrows to 560mm where the sink is placed
- The shower is 720mm x 980mm
- There are 6 wide ladder steps up to the mezzanine level (steps are 145mm deep, with a 240mm step up) and a small landing at the top of the ladder which is 560mm x 560mm
- The space between the mezzanine floor and ceiling is 970mm high
- The pull down bed over the dining area requires strength and control as the handle is approximately 1900mm above the floor and the bed is very heavy. It requires two hands to pull down.
- Once the bed is down it is 770mm from the ground (including the mattress)
- The pull out bed in the living area needs to be done carefully so as to not trap fingers. All cushions must come off and then the bed can be folded out.
- Once the bed is pulled out it is 450mm from the ground and there is 750mm between the bed and the counters



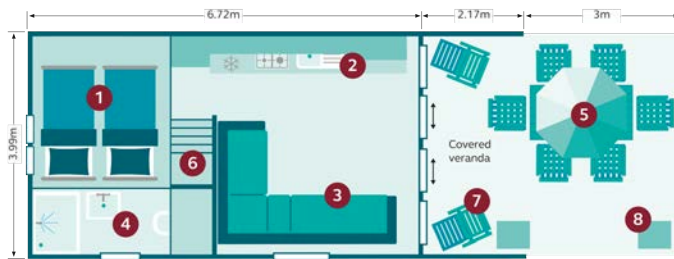
Glamping cabin - Day

**Key:**

- |   |  |
|---|--|
| 1. 6 seater dining area/pull down double bed. | 5. Veranda with 6 seater outside dining set. |
| 2. Kitchen area.                              | 6. Ladder to raised mezzanine level.         |
| 3. Seating area/double pull out sofa bed.     | 7. 2 chairs and low level table.             |
| 4. En-suite with shower.                      | 8. Boot box.                                 |

Accommodation may vary slightly per location.

**Floorplan of the Glamping Cabins in the Daytime Layout**

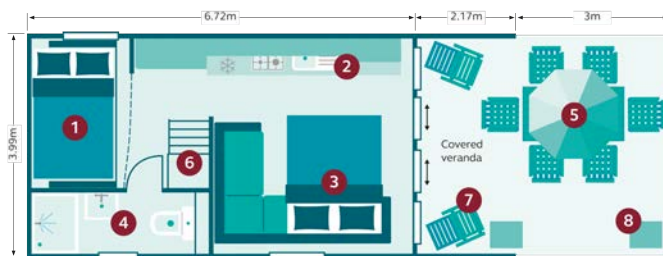


**Glamping cabin – Mezzanine Day/Night**

- Key:**
- |   |  |
|---|--|
| 1. Mezzanine level twin beds.             | 5. Veranda with 6 seater outside dining set. |
| 2. Kitchen area.                          | 6. Ladder to raised mezzanine level.         |
| 3. Seating area/double pull out sofa bed. | 7. 2 chairs and low level table.             |
| 4. En-suite with shower.                  | 8. Boot box.                                 |

Accommodation may vary slightly per location.

**Floorplan of the Mezzanine level**



**Glamping cabin – Night**

- Key:**
- |   |  |
|---|--|
| 1. 6 seater dining area/pull down double bed. | 5. Veranda with 6 seater outside dining set. |
| 2. Kitchen area.                              | 6. Ladder to raised mezzanine level.         |
| 3. Seating area/double pull out sofa bed.     | 7. 2 chairs and low level table.             |
| 4. En-suite with shower.                      | 8. Boot box.                                 |

Accommodation may vary slightly per location.

**Floorplan of the Glamping Cabin in the Nighttime Layout**



Access to the cabins is via a gravel parking space and up three steps.



Entrance to the cabin through sliding doors with a 100mm threshold.



You immediately enter into the living area, with the kitchen on the right and the sitting area on the left.



The sofa turns into a fold out bed.



There is a dining area at the back, which pulls down into a bed.



There is a ladder that goes up to the mezzanine level, where there is a further bed.



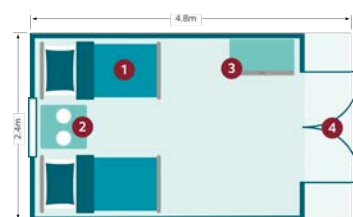
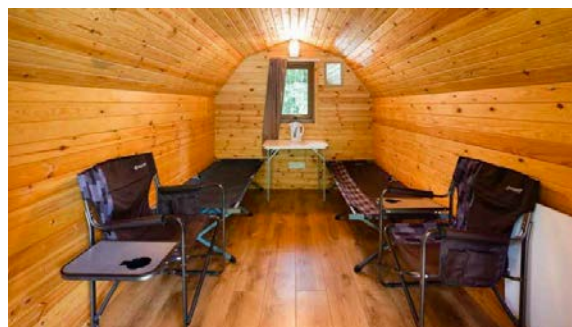
The bathroom is at the back of the cabin, and narrows to 560mm wide between the sink and the wall.

## Camping Pods

- There are 2 camping pods situated at the bottom of the site, close to toilet block C
- These are set on level part of the site.
- There are 3 steps up to each pod with handrails to both sides.
- Overall dimensions are 3400 x 2200mm.
- Contains 2 camp beds, 2 chairs and a table.



There is stepped access into the camping pods only



- Key:**
1. Two single camp beds.
  2. Table.
  3. Clothes storage.
  4. Small covered veranda.

**Camping pod – Day/Night**  
Coniston Park Coppice. Please note bedding is not included.

There is moveable furniture which can allow for extra room for movement.



The camping pods are within 50m of Toilet Block C

## Information

### Written Information

- A Large print version of the site leaflet is available from Reception
- A range of leaflets for local attractions are available in the Information Room.
- Please ask at reception if you have difficulty reading third party leaflets and staff will be happy to read these to you upon request

## Customer Care & Support

### Booking Procedures

- If you have any specific requirements for your stay please contact the site directly and they will be happy to discuss your requirements and reserve you the most suitable pitch wherever possible.

### Evacuation

- There are two assembly points on site, one outside of reception and the other past the Camping pods, at the bottom of the site.
- Please ask at reception for further information.

### Customer Care and Staff Training

- All on site staff have received disability awareness and etiquette training.

## **Public Transport**

- There is a bus service from the site gate to Ulverston and Coniston.
- There are further buses from Coniston to Hawkshead, Ambleside and Windermere
- Further details can be found on the bus website  
[www.geopunk.co.uk/timetables/town/coniston](http://www.geopunk.co.uk/timetables/town/coniston)